



STAR VISTA

Helping All Ages and Stages
Through Life's Challenges

FY 2018 Annual Report

For more than 50 years, StarVista has helped people throughout San Mateo County navigate life's challenges. Our counseling, crisis prevention, youth housing, and early childhood programs help tens of thousands of people in our community each year.



LETTER FROM THE CHIEF EXECUTIVE OFFICER

Every year, StarVista evolves to meet the changing needs of our community. As I reflect on where we have been this past year and what we have accomplished, I am humbled and inspired. I witness compassion at work everyday. I see how the passion of our employees drives action, resulting in more clients of every age and stage of life overcoming obstacles and realizing their best futures. I am honored that StarVista has been recognized as the premier thought leader and service provider addressing mental health, youth homelessness, recovery services, and suicide and crisis prevention within San Mateo County, and am proud that our updated brand identity reflects this expertise and innovation. Above all, I am grateful to the many community members, partners, donors, volunteers, and staff who make StarVista's success possible each and every day.

Many life-changing moments have marked this year. We expanded our school-based counseling services and are now on 40 school campuses. We reimaged our OnYourMind.net teen chat services to become mobile-responsive so that teens and young adults have easy access to support. We expanded our Differential Response partnership to serve families in the entire

county, and we celebrated another year of pride at our county's first LGBTQ+ center. I am proud of our staff, as they continue to meet clients where they are, without judgment, and provide the best services possible.

StarVista has a new look this year, but we remain the same, impassioned agency, wholeheartedly committed to representing, serving, and advocating for the diverse populations of our community.

Thank you to all of you – our supporters, collaborators, funders, donors, and allies – for making StarVista into what it is today. I am pleased to share this year's annual report with you in gratitude and recognition of your essential role in our success.

Warm regards,



Sara Larios Mitchell, Ph.D., MACP



Sara Larios Mitchell, Ph.D.
Chief Executive Officer

BOARD OF DIRECTORS

KRISTIN SUN, BOARD CHAIR

Senior Wealth Manager, Sand Hill
Global Advisors, LLC

KEN PESSO, VICE CHAIR

Retired Assistant Chief,
Probation Officer

ALISON PROCTOR, TREASURER

Partner, Seiler LLP

ELAINE CUMMINGS, SECRETARY

Consultant

SANJAY AGGARWAL

Senior Manager Corporate Strategy,
Cisco Systems

CHIEF ED BARBERINI

San Bruno Police Department

SHERIFF CARLOS BOLANOS

San Mateo County Sheriff's Office

MARK CONSTANT

SVP - Corporate Finance & Treasury,
Franklin Templeton Investments

JENEÉ LITTRELL

Deputy Superintendent,
Student Services, San Mateo County
Office of Education

ALINA LLOYD

Private Wealth Manager,
Merrill Lynch Private Banking &
Investment Group

CHARLEY SCANDLYN

Pastor, New Community Church

SETH SCHALET

Chief Executive Officer,
Prevent Blindness Northern California

STEVE SHRAY

Self-Employed or Consultant

BRIAN SISCO

Consultant

ROGER TOGUCHI

Consultant

ERIC WOLLMAN

Retired Chief,
Burlingame Police Department

HOWARD YANG

Global Head of Product Data
Operations, Facebook

ERICK YOUNG

Technical Solution Architect,
IBM Corporate HQ



THE FATHERS GROUP

In a small room in the Fair Oaks Community Center, fathers sit proudly with their children around a table of food. Kids eat pizza, then leave the table to draw pictures and play games. Fathers laugh back and forth, joking both in English and Spanish. This is the scene of a Fathers Group Graduation, an important piece of StarVista's Healthy Homes program, which serves families with children ages 0-5. **For 8 weeks, these fathers have met in this same room, sharing stories and discussing what it means to be a father.** The rules they follow: no judging others' opinions, speak only for yourself, have a good sense of humor, and always show respect. For StarVista staff member, Moises Lopez, this professional scene was inspired by a personal one.

The oldest of three, Moises immigrated with his parents at a young age from Mexico to Redwood City, California. For the Lopez family, Redwood City was a culture shock. Not many Latinos lived in the community at that time, and it lacked the diversity the family was accustomed to in Mexico. The change was a struggle, particularly, Moises remembers, for his father. Over time, the stresses weighed more and more on his dad, and he turned increasingly to alcohol as a means of escape. Over the next 15 years, Moises' father was in and out of the home. Moises yearned for a close relationship with his dad and didn't understand why he wasn't around.

It wasn't until Moises began working as a Family Partner in StarVista's Healthy Homes program that he began to understand the many challenges his dad had faced as a bicultural Latino in the Bay Area. Building a new life for his children in the United States had meant trying to retain the family's Mexican culture, values, and heritage, despite the many external factors that had interfered. Motivated by his own family story, Moises now works everyday to provide an opportunity for fathers and kids to develop the deep connection he had craved as a child.

Building deep relationships between fathers and their children was the shared goal when First 5 San Mateo

awarded StarVista funding for fatherhood engagement in 2017. "Most community services out there are geared towards moms or kids," Moises explains. "There's a huge lack of services to support fathers and an immense need." When Moises and his colleague, Mario Costello, first put the word out to their StarVista colleagues about the new Fathers Group, they were looking for any dad who wanted support, but they also had a keen eye out for fathers who were disengaged in the home or who were a repeated source of stress or fear for their spouses and children. Moises and Mario also inquired about children who were expressing behavioral issues, as this is often a sign of an absentee father. "We were looking for dads who had never been taught how to be dads, how to be husbands, spouses, or partners," Moises explains. "I would call them and invite them to be part of our Fathers Group."

It was an uphill battle to start: 5 out of every 6 fathers declined Moises's invitation. Still, over time, the Fathers Group grew and within a year, the group swelled from just one dad to 12, the program maximum. **To best serve the communities they were recruiting from, Moises and Mario decided to hold the first group in Spanish, the native language of most of their clients.**

They put together an eight-week curriculum focusing on fatherhood in all its forms. "We would ask, 'What are the challenges of being a new dad, a single dad, an immigrant dad, a divorced dad?' And we would ask our participants what they were struggling with, what barriers they faced, and then make space to discuss those barriers and issues."

"I've seen firsthand how so many factors are influencing our dads, including immigration stresses and a lack of resources to support fathers. All of these things led to alcoholism in my dad, and it doesn't have to be like that. We can connect these families to resources like food distribution, employment, and education." Having services available for free, taught in a client's primary

“I never had a dad to tell me how to father,” one dad shares, “now I’m learning all these things: how to speak to my child, how to care for them, how to be a loving father...” - *Father’s Group Participant*

language, and easily accessible within the community, reduces barriers for families to get help.

The group recently took on the topic of domestic violence. The dads watched a video that portrayed a fight between husband and wife while their baby sat in his crib nearby. The video flashed forward: the baby was now a teenager and was the family member most affected by the unstable home life he had experienced as an infant. He was experiencing frequent tantrums, breakdowns, and problems in school. When the video ended, one dad began crying. “This is what happened when I grew up and what I’m trying to prevent in my home,” he said, “but I’m doing the same thing.” **Allowing dads a safe space to reflect on their own experiences gives them a better picture of how they want to raise their own children, and how they can become the dads they want to be.** It also provides them access to counselors to address immediate needs and crises, like the ones this father was experiencing in his home.

The link between how a father grew up and how he parents his child, is strongly related to home life and culture. “It’s culturally not acceptable for a Latino boy to cry, show feelings, or speak back about how they were hurt. They’re supposed to be quiet, speak formally to parents, to be submissive,” Moises says, “In this group, fathers are able to be vulnerable enough to say, ‘Ok, that’s how I was raised, but if I want my child to feel he is loved, he has to be able to share his emotions with me,’ and that’s a big step for a lot of our dads.”

“I never had a dad to tell me how to father,” one dad shares, “now I’m learning all these things: how to speak to my child, how to care for them, how to be a loving father, how by playing with my child, I’m teaching them.”

“As family partners, we’re a voice for underserved families,” says Moises. **“These fathers don’t have any other space that asks them, ‘Hey, what’s going on in your life right now?’ That’s what we provide.”**

At the end of the 8 week curriculum, the fathers return to the Fair Oaks Community Center with their families. Each father stands up in turn to shake Moises’ hand and proudly accept his Healthy Homes Fathers Group diploma. Excited children take a picture with their dad and his new degree. **The smiling faces of fathers, partners, and children show, more than words the deep, rewarding impact this program has on families.**

One day, with additional funding, Moises hopes to provide dinner and childcare for his fathers, and rewards and incentives for their completion of the program. He hopes to expand the Fathers Group geographically, delving into the pressing concerns of dads all over San Mateo County. For now, Moises and Mario continue to support the dads currently enrolled in the program and are also actively recruiting new dads to the program.

To learn more about Healthy Homes and the Fathers Group, visit www.star-vista.org/programs or call (650) 591-9623.



Healthy Homes is a program of StarVista that serves families with children ages 0-5. It strives to prevent child abuse and neglect, enhance the parent-child relationship, and reduce the impact of risk factors such as domestic violence, trauma, poverty, immigration, food insecurity, substance abuse, mental illness, and language barriers, among others. The program provides services free of charge to families in English or Spanish, including home-based family partner support services, mental health services for children and their caregivers, parent support groups, and parent-child activity groups.



SCHOOL-BASED SERVICES

An Individualized Approach

Every year, StarVista provides on-campus counseling, crisis intervention, and support services to more than a thousand students throughout San Mateo County.

We spoke with Program Director, Dr. Hazel Benigno about the incredible growth of our School-Based program and what it means for local school communities. Read on to learn more.

Q. Tell me a little bit about the School-Based Counseling program?

A. StarVista provides mental health services for students in 40 elementary, middle, and high schools throughout San Mateo County. Services include assessment, crisis intervention, individual and group therapy, family therapy, and consultation with parents, teachers, and other school staff. The goal of this program is to help students improve aspects of their lives, leading to enhanced school performance and increased engagement in learning.

Q. How has StarVista's School-Based Counseling program grown over time?

A. In 2013, we were in 12 schools. Now we're in 40! Program funding has grown from just under \$400K in 2013 to \$1.3M, as schools have realized the importance of counseling and support programs and are requesting StarVista's services more and more. In the past, schools only wanted group and individual counseling for general education students, but that's changed too. Now we provide counseling, Social-Emotional Learning (SEL) services, prevention services funded through probation, and educationally-related mental health services for Special Education students.

Q. What is Social-Emotional Learning?

A. According to the Collaborative for Academic, Social, and Emotional Learning (CASEL), one of the leading organizations researching and implementing social-emotional learning programs in schools, SEL lessons focus on helping students and teachers manage emotions, maintain positive relationships, and make responsible decisions. The impact is beyond social and emotional growth, as improving these skills has been proven to also help students improve in academics, behaviors, attitudes, and their general ability to learn.

Q. What are some of the innovations that have helped our School-Based Program expand in this way? What is unique about our approach to School-Based Counseling?

A. Our team has always been very forward-thinking and flexible in our work. No two kids and no two schools are the same, so we have made it a priority to adapt our school-based services to whatever each school community needs. We work with the school staff to create an individualized model for what our program will look like in that particular school, which can include group therapy, family therapy, classroom presentations, SEL and Special Ed services. This has really become our strength at StarVista: our ability to customize services for each unique school and its students so that no two School-Based programs look the same.

Q. Can you give us an example of what an individualized approach looks like at a particular school?

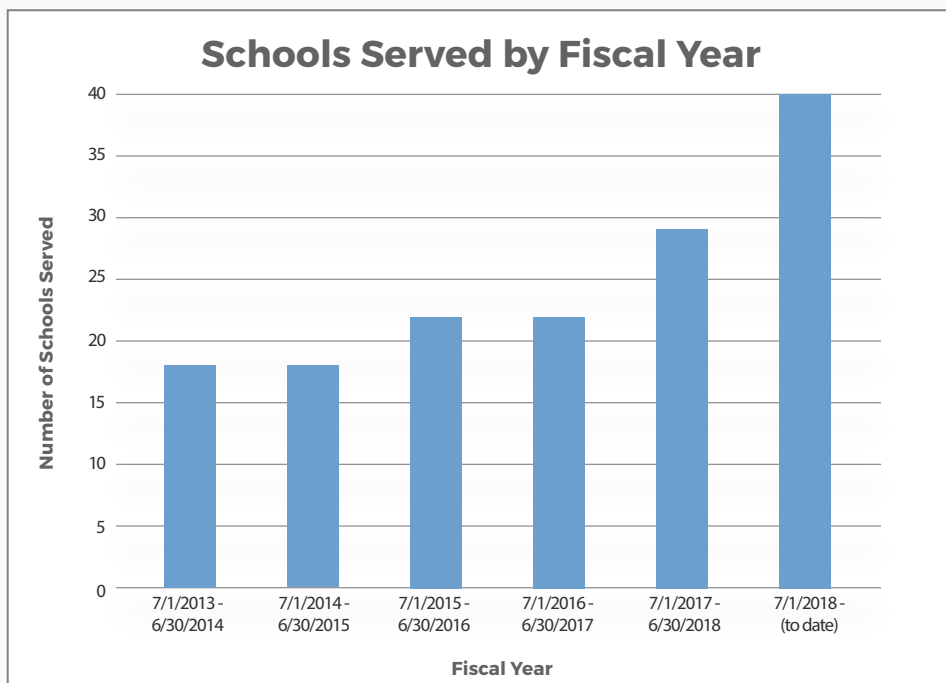
A. Sure – a good example would be at one of our high schools, there we have two clinicians on campus, five days a week. They provide individual and group counseling, but for the most part are available for students to just drop in and talk about whatever is on their mind that particular day. They also provide crisis intervention if a student appears to be in distress or is expressing thoughts around depression, self-injury, or suicide.

Meanwhile at one elementary school, our program looks entirely different. We have one clinician on site for three days a week, providing an integrated model of Social-Emotional Learning classes and individual and group counseling to students.

At all our schools, we train our staff to see mental health as a job beyond the traditional 1:1 counseling model. Our clinicians enlist the help of parents and school staff, consulting and working with them to broaden their understanding of what mental health can be so that together we can best support our young people. We really see ourselves as clinicians, consultants, and advocates for our students, always with an equity-focused lens.

Q. How does StarVista's approach align with larger trends in the school-based mental health field?

A. StarVista is really leading the curve as more and more schools are diving into SEL. There's a huge movement in education to dismiss the traditional "one-size-fits-all" approach to both academic learning and mental health support and to treat each student as an individual. And that same mentality has really shifted the focus for many to educational equity, which takes to heart the idea that not all students start in the same place academically, emotionally, or socially. Not everyone has the same background, the same means or privileges, but everyone should be given the opportunity to succeed and the tools needed to get there. Our clinicians conduct community-based research to assess the needs of a particular community's students and how our clinicians can best serve those students. Often times that means putting SEL interventions in place, providing crisis intervention supports, as well as advocating for additional academic support services for students who may be behind their peers in the classroom.



Q. Tell me more about the students you serve. What are some of the most common challenges and issues affecting middle and high schoolers in this county?

A. One common theme we hear from our students is the immense need they feel to be the best. All our students – elementary, middle, and high schoolers – constantly feel the pressure to succeed, which is difficult to address because so often these stresses and thoughts are being driven by challenging external circumstances, such as the climate in Silicon Valley, pressures from caregivers and family, and the relative ease of social comparison. Students are constantly measuring themselves against each other and public figures on social media. They're comparing themselves to what they consider to be the "best" and are inevitably falling short. It can be a lot for our youth, on top of their regular academic stresses.

Our students also express issues related to identity and self-understanding, and more and more, we're hearing growing concerns about the current sociopolitical climate. Students are impacted by what they see and hear in current events and politics, and the threat of gun violence has become a huge stressor for our youth. They take part in Active Shooter drills at school, just as they do earthquake and fire drills. It's a very real topic on our students' minds.

Changes in immigration reform policy are also weighing heavily on these youth. Many San Mateo County families have been directly impacted by changes at the national level. We have an unprecedented number of students and families sharing fears about family separation and deportation. We've never experienced this level of stress around the topic of immigration before with our school-aged youth.

This year, our amazing team of 36 clinicians and case managers includes:

- 17 bilingual team members
- 22 bicultural team members
- 11 students earning a Master's or Doctorate degree
- 22 Masters/Doctoral Level Clinicians



Because many of these issues are rooted in a student's particular identity, it's important for our staff to be diverse so that we can relate to and support the needs of every community across this county. Our team members are an intentional reflection of the communities we're working in, and we're very proud of this diversity.

Q. What role does hiring have in the success of your program?

A. Hiring is everything when it comes to the success of our program. Clinicians are the face of StarVista at each school we partner with, and hiring is really about finding the right fit for the program, as well as the school community. When I'm looking for staff, I keep close to heart the motto "hire character, train skill." We bring onboard smart individuals of the utmost integrity and guide them through our trainings, supervision, and support. We have been really lucky year-over-year in assembling our School-Based team from an extraordinary pool of candidates, and I'm really proud of the expertise, diversity, and integrity that these team members hold.

Q. This program accomplishes so much. At the end of the day, why is StarVista's School-Based Counseling program important?

A. So many parents have no idea counseling is available on their child's campus and don't know to ask for it. Years ago, academic counseling was the only resource available to students, so parents and caregivers aren't always aware of other kinds of support. I've heard from so many parents who were concerned about their child and frustrated about not being able to find a convenient, affordable therapist, when all along, StarVista's program had been right on that student's campus. We want students, parents, and community members to know these services exist so that they can access them.

For StarVista, it's about meeting clients where they are at, physically, emotionally, and mentally. If we can reduce barriers to an individual accessing services, we're that much closer to helping the individual in need find their path and get the help they deserve.



"Our community is such that we can only successfully teach our children if we can meet all of their needs- emotional, psychological and intellectual. Without critical services such as those offered by StarVista, we would be unable to have many of our children meet with success. StarVista is a major component of our community school."

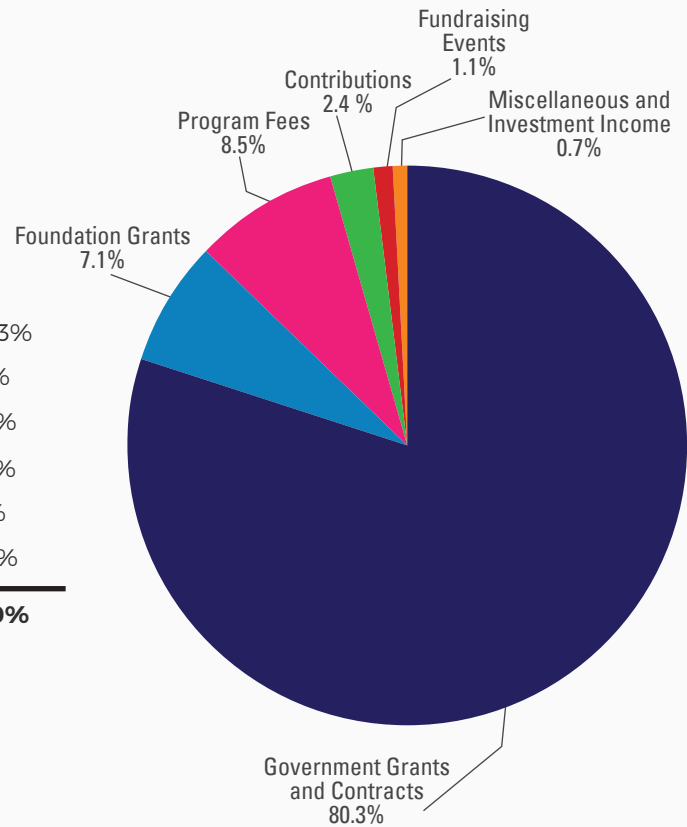
- Teacher, Kennedy Middle School in
Redwood City School District

FINANCIAL SUMMARY

July 1, 2017 to June 30, 2018

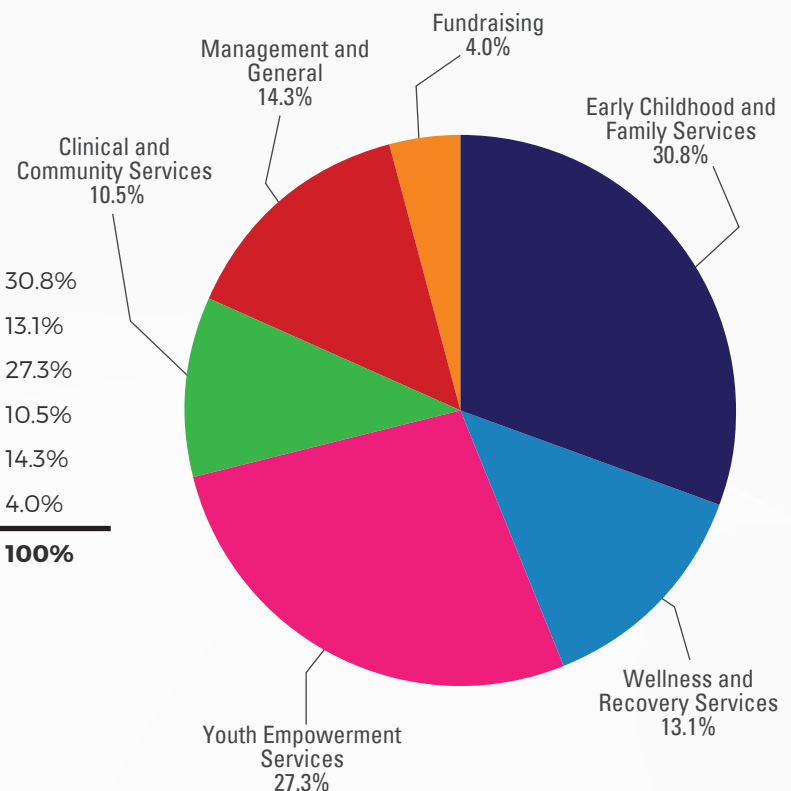
REVENUE

Government Grants and Contracts	\$10,981,729	80.3%
Foundation Grants	\$977,500	7.1%
Program Fees	\$1,159,104	8.5%
Contributions	\$322,495	2.4%
Fundraising Events	\$149,625	1.1%
Miscellaneous and Investment Income	\$92,314	0.7%
Total	\$13,682,767	100%



EXPENSES

Early Childhood and Family Services	\$4,205,611	30.8%
Wellness and Recovery Services	\$1,789,878	13.1%
Youth Empowerment Services	\$3,721,463	27.3%
Clinical and Community Services	\$1,435,956	10.5%
Management and General	\$1,948,954	14.3%
Fundraising	\$538,927	4.0%
Total	\$13,640,789	100%



OUR IMPACT



StarVista provided services to over **40,000** individuals in San Mateo County.



The San Mateo County Pride Center offered training services to over **2,000** participants.



Our 24hr Crisis Hotline Staff and Volunteers answered over **11,000** phone calls.



Our Residential programs provided services to over **500** youth.



Our Early Childhood programs served over **4,800** children across the county.

THANK YOU!

We are deeply grateful to our donors who contributed time, energy and financial support that enabled us to transform the lives of children, young adults, and families.

\$100,000+

Bella Vista Foundation
The Grove Foundation

\$50,000 - \$99,999

David and Lucile Packard Foundation
Genentech Foundation
John and Heather Mozart
Peery Foundation*
Peninsula Health Care District
Sequoia Healthcare District
SolMateo

\$25,000 - \$49,999

Nasrallah and Eqbal Behbehani
Help For Children
The Hurlbut - Johnson Charitable Trust
Kaiser Foundation Medical
Centers - San Mateo Area
City of Menlo Park
Myra Reinhard Family Foundation
San Francisco Forty Niners Foundation
Sobrato Family Foundation

\$10,000 - \$24,999

The Almanac*
Atkinson Foundation
Burt Family Foundation
Colorprint
Danford Foundation
Dana and John Perine
Mindy and Jesse Rogers

\$5,000 - \$9,999

Anonymous (3)
Carl Gellert and Celia Berta Gellert Foundation
Elaine and Burt Cummings
The Hannig Law Firm
In-N-Out Burger Foundation
Drs. Lesley and Russel Martin
Mills-Peninsula Health
Services | Sutter Health
Ashley Mozart
John Forrest Mozart
Justin Mozart
Alison Proctor and Phuong Dang
Prometheus
Richard and Virginia Strock Family Fund*
San Mateo County Realtors
Foundation (SAMCAR)
Steve and Wendy Shray*
Sally Chambers Solari*
Sutter Health Palo Alto Medical Foundation
Roger and Betty Toguchi
Thelma Doelger Charitable Trust
Wells Fargo Foundation
Bill and Sara White

\$1,000 - \$4,999

ABD Insurance and Financial Services, Inc.
Sanjay Aggarwal*
Karen and Ellis Alden
Anonymous* (6)
Vinney Arora
Peg and Frank Austin
Bay Area Physicians for Human Rights
Brian Beresini
Boston Private Bank & Trust Company
Juliet Brodie and Jane Schacter
City of Burlingame
Cargill Salt
Cisco Systems Foundation
Monica Corman
Coupa
DataSafe
Dostart Development Company
Erin and Michael Forestner
Fusion Academy San Mateo
Jackie Gainer
Michael and Judy Garb
Stacy and Bob Gebhardt
Paul and Carmen Goeld
Charles Guan*
Craig and Kari Hanson
Jewish Community Federation
Cameron and Celina Johnson
Robert and Arlene Katzive*
Suzanne Legallet*
Jeneé Littrell
Alina and Kevin Lloyd
Stephan Marshall
McDowall Cotter, APC
McGannon Family Fund*
Katie Miller
Beth and John B. Monroe
Nazgol Moussavi and Reza Hajebi
Zia Oboodiyat
Chuck and Carol Ott
Pacific Gas and Electric Company
Peninsula Conflict Resolution Center
Rebecca and Harlan Pinto
Margi and Tom Power*
Qualcomm Charitable Foundation
Raiser Construction Company, Inc.
Recology San Mateo County
David Rosenbaum and Katerina Demeti
Safeway Foundation
San Francisco Foundation
San Mateo Credit Union
Sand Hill Global Advisors
Charley and Nicole Scandlyn
Seth Schalet and Claire Berney
Seiler LLP
Elise and Greg Shelley

South San Francisco Scavenger Company
Kristin and Calvin Sun*
Symantec Corporation
Spenser Tangman and Rebecca Williamson
Walmart
Windy Hill Property Ventures
Eric and Debbie Wollman
Catherine Wormington*
Howard and Dr. Evelyn Yang
Erick Young and Thu Pham
Barbara Zivkov

\$500 - \$999

Alliant Credit Union
Anonymous (4)
Miki and Bill Armstrong
Carol Bergman
Todd Black
Carlos and Kim Bolanos
Box.org
Frederick Bravo
Brooks Family Fund*
Eric Byunn and Alyssa Rieder
Cadence Design Systems, Inc.
Anne Chiramberro
Comcast
Costco Wholesale
Dr. Eric H. Denys and Dr. Sonja S. Declercq
Sally and Craig Falkenhagen
Grace Griffin
Dave and Patricia Harders
Dana and Tom Hayse*
Leslie Holzman
Don and Elaine Horsley
IBM Corporation
Kaiser Foundation Health Plan, Inc.
Carelle Karimimanes
Rich Kelley
Mary Kennedy and Ray Furey
Bradford Leary
Christian Lee
Amy Magni
John Maltbie and Greta Helm
Keith and Jessica Mattioli
Francine Miltenberger and Kenneth Kilen
Drs. Sara Larios Mitchell and Robert Mitchell
Theresa and John Musser
Rainbow Skate
Jill and George Roumeliotis
John Rudella
San Mateo Lodge
Marla Sari
Lata Shah
Marna Sifuentes
Lindsay Stark
Ruth Tucker



Val Vandervo
John and Marie Violet
Mimi Webb
Wornick Jewish Day School

\$250 - \$499

Air and Ground World Transport
and Employees*
Anonymous (2)
Robert and Beverly Avery
Carol Bacchetti
Edie Barry
Clarise Blanchard
Alice Brattmiller
Charles Schwab & Co., Inc.*
Zac and Narges Dillon
Jennifer and Richard Dizon
Jack and Mary Dooling
The Federated Woman's Club of San Carlos
Angela Gaffney
Bently Guglielmi
Jessica Harders
Patricia Hart
Islam Hassanein
Timothy Herzik
Lily Hurlimann and Jim Bassett
Susan Jerome*
Jesus Jimenez
Jean Johnson
John and Natalie Jordan
Elizabeth B. Kaplan
Ruth Krumbein
Timothy Mackie
Nancy Magee
Al and Nancy Malaspina
Julie and Tom McGannon
Michael and Anne Milliken
Kate Morey
Network for Good
Nikolai Novikov
Derek Park and Michael Cohen
Parkview Financial
Rachel Perkel*
Brian Perkins and Cathrin Callas
Ken Pessio
Harold Poskanzer
Sandra Rick
Mike and Diane Roesberg
Bernard and Shelley Ross
San Mateo County Central Labor Council
Lynn Schuette and Tamora Horen
Susan Takalo
Amy Thompson
Catalina Valencia
Visa International

\$100 - \$249

Acacia Property Corporation
Cris and Todd Adair
Peter and Maggie Alegria
Kevyn Allard
Mark Allen
Denise Alvarez
Anonymous* (3)
Rachel Araiza
Chief Jeff Azzopardi
Robert and Edith Barry
Tanya Beat
Myrna Bell
Susan Bird
Pamela Bischoff
Norma Bozzini*
Brodersen Family Gift Fund*
Dr. Stephanie D. Brown
Elizabeth and Pierre Buljan
California Health Care Foundation
Mike Callagy
Oneida Chi
Russ and Debbie Christenson
Denise Chun
Wilma Cimino
Lisa Clayton
Ellen Clear
Adam Cohen
Stephanie Cole
Ron and Gayle Collins
Shari Conrad
Judy Cordon
Laura Crofford
Edwin Davisson
Shelley Eberle
Carol Elliott
Jim and Trish Estelita
Eureka!
Denis and Cheryl Fama
Claudia Ferguson
John and Kathy Fitzpatrick
David Fleishman
Lawrence and Leah Friedman
Gabriel Garcia
Tom and Kathe Gibboney
Kimberley Golding
James Goudy*
Council Member Robert Grassilli, Jr.
Brian Greenberg and Lea Goldstein
Carole Groom
Jody and Don Harrier
Mary Harris
Frances B. Hart
Cat Haueter
Lauren Hemenez
Ron Herman
Susan Horst
Leslie Williams Hurt
Emily Ingrao
Mark Jamison
Charles and Joan Johnson
David Johnson
Pamela Johnson
Jeff Jonah
Donna Jones
Marge Jones
Debbi Jones-Thomas
Natalie Jordan

M. Bess Kane
Harvey and Gay Kaplan
Jessica Kaplan
Philip Keil
Steven and Jane Kikuchi
Jana Kiser
Kali Klena
Jonathan and Deborah Krass
Pamela and Aaron Kurtzman
Rob and Carolyn Lajoie
Jennifer Lee
Richard Lee
Kathy Leroux
Karen Li
LifeMoves
Jon Liu
Hal and Carol Louchheim
Ann and Ronald Malouf
Debbie and Merrit Mangels
Linda Mann
Sarah Marx
Lydia and Robert McCool
Elizabeth and Ross McDougall
Bernadette and Thomas Mellott
Maude Meyers
Bonnie Miller
Patricia Motto
Dennis Murphy and Cynthia Hunton
Irena Naneva
Maria Naneva
Pete and Leslie Nannarone
Elizabeth Newman
Ben Nguyen
Yen Nguyen
Lisa Norlander
Steven Oppenheim
Chief Albert Pardini
Peninsula Roller Girls, Inc.
Kristina Perez
Leila Perreras
Chris Perrone
Bill and Ellen Peters
PICTURE 2000
Corinne Pitre
Dave Pomeroy
Sarah and Pete Poulain
Kristen Proctor
Russell and Helen Pyne
Matthew Reeves
Sheila Riley
Mark Robbins
Elizabeth Roepke
Susan Heimlich Rose
Diana Diamond Ross
George Roumeliotis
Bari Rudikoff and Gordon Manning
Robin Rudikoff and Ronnen Miller
Teresa Sampayan
San Bruno Police Department
San Mateo County STD/HIV Program
Trisha Sanchez
Alan and Emily Sarver
Seaport Industrial Association
Paul Seto
Mike and Sherri Shaner
Dr. Jerry Shefren*
Mindy and Jeff Shelton
Bonnie and Harvey Silverman

Greg and Jeanne Simonian
Debra Smith
James Smith
Marissa Song
Wendell Soohoo
Marian Sosnick
South San Francisco Police Department
Tammy Spediacci
Paula Stowers
Annally Sunga
Jae Sweet
Dianna Thomas
Dr. Angela Toy
Robert and Christina Vale*
Varian Medical Systems, Inc.
Kate Waffle
Linda Wang
Dianette Washer
Dr. Stanley and Constance Weisner
Nancy Young
Dierdre Zimits

UP TO \$100

Dr. Jei Africa
Kevin Andresen
Georgia Antonopoulos
Maria Aquilina
Brad Arlett
Donald Bacci
Phoebe Baggotte
Janis Baron
Bill Beaver
Emiliana Behrmann
Genevieve Bencze
Monique and Avner Ben-Dor
Bob and Jo Benson
Ryan Berkshire
Neil Bhateja
Patricia Bohm
Mark Bolano
Isabel Boustead
Jeanne Brunk
Peter Butler
Jasmine Carson
Sophia Casey-Stewart
Bridget Castro
Peason Chiang
Stefanie Chin
Susan Clark
James and Cheryl Cleeves
James Clement
Patricia Collins
Carol Cook
Maria Gonzalez Cordero
Alex Daw
Maddie Dei Rossi
Sandra Del Balso
Catherine Del Bendick
Anne Delarosa
Chloe Dunnigan
Patricia Eastburn
Tama Eichen
Angel Enriquez
Amaliz Espinose
Clara Fields
Sara W. Fisher
Jeff Fitts
Alenah Forester

Opal Forry
Robert Freiri
Rachel G.
Patrick Gaughan
Lauren Gonsalves
Saili Gosula
Dr. Peter and Ann Gregory
Andrea Guariglia
Melissa Guariglia
Curtis Hale
Ann Blick Hamer
George Harders
Kathy Healy
Janette Herceg
Christine Hery
Susan Hiestand
Caitlin Hilbert
Jim and Carol Ida
Arlena Jackson
Joanna and John Jaeger
Cynthia James
Abida Javed
Teresa Jones
Judith Kell
Angie Khong
Annica Kim
Gary Kwolek
Rachael Lacey
Sabina LaCasse-Harris
Mimi Leinhos
Emily Livermore
Danielle Lucchesi
Margaret Macres
Nicole Marquesa
Patricia Marsala
Tatum McGuffin
Karim Merchant
Jonathan Meyer
Nancy Minnig
Chris Moody
Len Moore
Regina Moreno
Dr. Lorita and Eric Morgenthaler
Walt and Jo Ellen Nieder
Kathy O'Reilly
Marisa Ornelas
Jacqueline Pace
D Park
Reena Patton
Erika Perez
Olga and John Poole
Kristal Powers
Alex Prizzo
Trevor Prunty
Janet Pulliam
Lee Raney
Carol Reitmeier
Armello Rodriguez
Stella Rush

Stephanie Sanford
Flor Santana
Judith Santopietro
Tamlyn Schafer
Noah Schembri
Rachel Schonfeld
Ariel Seidman
Madeleine Seidman
Mark Shore
Peter and Betty Shum
Jill Singleton
Beth Smerdon
Alex Solorzano
Carol Squires
Susan E. Stevick
Mark Szymanski
Samantha Taylor
Betsy Todd
Lizette Tran
Meagan Trott
Lia Tsur
Sheryl Uyan
Paula Watt
John and Elizabeth Weatherby
Akemi Weddington
Bernadette White
Blaise Winterhalter
Karen Xu
Erika Zemann

IN-KIND

Karen and Ellis Alden
All Spice
All Ways Balloons
Anonymous
Vinney Arora
B Street & Vine
B. Stow Boutique Gifting Studio
Kian Badiei
Barre3 San Mateo
Laura Barsocchini
Robert Bartoli
BATS Improv
Bay Area Discovery Museum
Bella Luce Skin Care and Healing Center
Berkeley Repertory Theatre
Deborah and Peter Blackmore
Clarise Blanchard
Carlos and Kim Bolanos
Danielle Brewer
Sarah Burdge
Burlingame Police Department
Byington Vineyard & Winery
California Shakespeare Theater
Children's Creativity Museum
Children's Discovery Museum of San Jose
Children's Fairyland
Crowne Plaza Hotel
Cuisinett
Elaine and Burt Cummings
DataSafe
Devil's Canyon Brewing Co.
Narges and Zac Dillon
Disneyland Resort
Duckhorn Vineyards
Fine Arts Museums of San Francisco
Flying Suitcase
Sarah Freeman



Gallo Wines
 Gilroy Gardens Family Theme Park
 Melissa Guariglia
 Hallmark
 Jessica Harders
 Lauren Heminez
 Gloria Heminez and Zia Oboodiyat
 Hobee's Restaurant
 Honey Bear Trees
 Julie Ichikawa
 IMG
 Ivania Angel Design
 Jesus Jimenez
 Jira Couture Salon
 Pyar Khatri
 King Chuan
 Konica Minolta Business Solutions
 Krazy Zexy Photography
 La Petite Baleen
 Alina and Kevin Lloyd
 Nancy and Philip Mancini
 Mayfair Community Center San Jose
 McKahn Family Cellars
 Mid-Peninsula High School
 Rebekah Miramontes
 Drs. Sara Larios Mitchell and Robert Mitchell
 Moriana, Designer
 Kara Murano
 Denise Newman
 Doriel Nishidoa
 Noelanis
 Oakland East Bay Symphony
 Old County Cellars
 Will Ovando
 Ken Pessio
 Portraits to the People
 Kristen Proctor
 Pump It Up Belmont
 Reach and Teach
 The Riddler SF
 Robin Rudikoff and Ronnen Miller
 Russian Ridge Winery
 Alfred Saenz
 Safari Run
 Sam's Chowder House
 San Francisco Zoo
 San Jose Giants
 San Mateo County, Office of the Sheriff
 Gian Michael Sarabia
 Hal and Becky Schuette
 Lynn Schuette and Tamora Horen
 Elise and Greg Shelley
 Clayton Shore
 Steve and Wendy Shray
 Doug Slakey
 Marissa Song
 Sonoma Raceway
 St. Ambrose Episcopal Church
 St. Roberts Parish
 Lindsay Stark
 Kristin and Calvin Sun
 SusieCakes
 Target - Redwood City
 Roger and Betty Toguchi
 Alex Tsai
 Uber
 Vesta

Kevin Wang
 Dianette Washer
 Linda Watanabe
 Stephanie Weisner
 What the Mesh Wreaths
 Rebecca Williamson and Spenser Tangman
 Winchester Mystery House
 Eric and Debbie Wollman
 Ally Wright
 Paul Wright
 Yerba Buena Center for the Arts
 Erick Young and Thu Pham
 Lisa Young
 Zola

IN HONOR OF

In honor of 11 Wonderful Years
Denise Alvarez
 In honor of James Bohm
Patricia Bohm
 In honor of Crisis Center Volunteers
Susan Jerome
 In honor of Katerina Demeti
David Rosenbaum
 In honor of Michael Garb
Vinney Arora
Linda Mann
Drs. Sara Larios-Mitchell and Robert Mitchell
Mindy and Jeff Shelton



In honor of Islam Hassanein
Denis and Cheryl Fama
 In honor of Cynthia and Eric Hauter
Cat Hauter
 In honor of Noelle Gondorf
Val Vandervort
 In honor of Ken Jew
San Mateo County STD/HIV Program
 In honor of Elizabeth Kaplan
Jessica Kaplan
 In honor of Christina Lansdown
Reena Patton
 In honor of Lesley Martin
Susan Bird
 In honor of her friendship with Lynn Schuette and her wife Tamora Horen
Carelle Karimimanes
 In honor of Sue Somrak
Kathy Leroux
 In honor of Teresa Wace
Anonymous
 In honor of William F. Wollman
Eric and Debbie Wollman
 In honor of Randy Yano
Elaine and Burt Cummings

IN MEMORY OF

In Memory of Kathy Beavers
Nancy Minnig
 In Memory of Robin Black
Todd Black
 In Memory of Lupe Camacho
Emiliana Behrmann
Myrna Bell
Carelle Karimimanes
Patricia Marsala
Stephanie Sanford
Paula Watt
 In Memory of Priscilla Chiu
Patricia Hart
 In Memory of Jim DeWitt
John and Elizabeth Weatherby
 In Memory of Tom Goff
Jill Singleton
 In Memory of Carole Holland
Cris Perry
 In Memory of Barbara Lee
Karen Li
 In Memory of David Ochoa
Air and Ground World Transport and Employees
 In Memory of "Peter and Trey"
Philip Keil
 In Memory of Randy Yano
Alice Brattmiller
Jeanne Brunk
Laura and Alan Crofford
Marge Jones
Gary Kwalek
Sabina LaCasse-Harris
Janet Pulliam
Peter and Betty Shum
Debra Smith
Paula Stowers
 In Memory of Danny Stevenson
Anonymous
 In Memory of Barbara and Dan Yamaguchi
Jennifer K. Lee

*Includes gifts made through Donor-Advised Funds at Benevity Community Impact Fund, Bright Funds Foundation, Fidelity Charitable Gift Fund, Franklin Templeton Investments, Marin Community Foundation, Morgan Stanley Global Impact Fund Trust, Inc., Network for Good, Philanthropic Ventures Foundation, San Francisco Foundation, Schwab Charitable Fund, Silicon Valley Community Foundation, Wells Fargo Advisors, YourCause, or other entity.

Every effort was made to include all gifts made by private individuals and organizations during the July 1, 2017 – June 30, 2018 fiscal year. Please accept our apologies for any omissions or errors. Please note that government contracts and grants are not included in this listing.

If you have any concerns, please contact us at 650-591-9623, ext. 106.

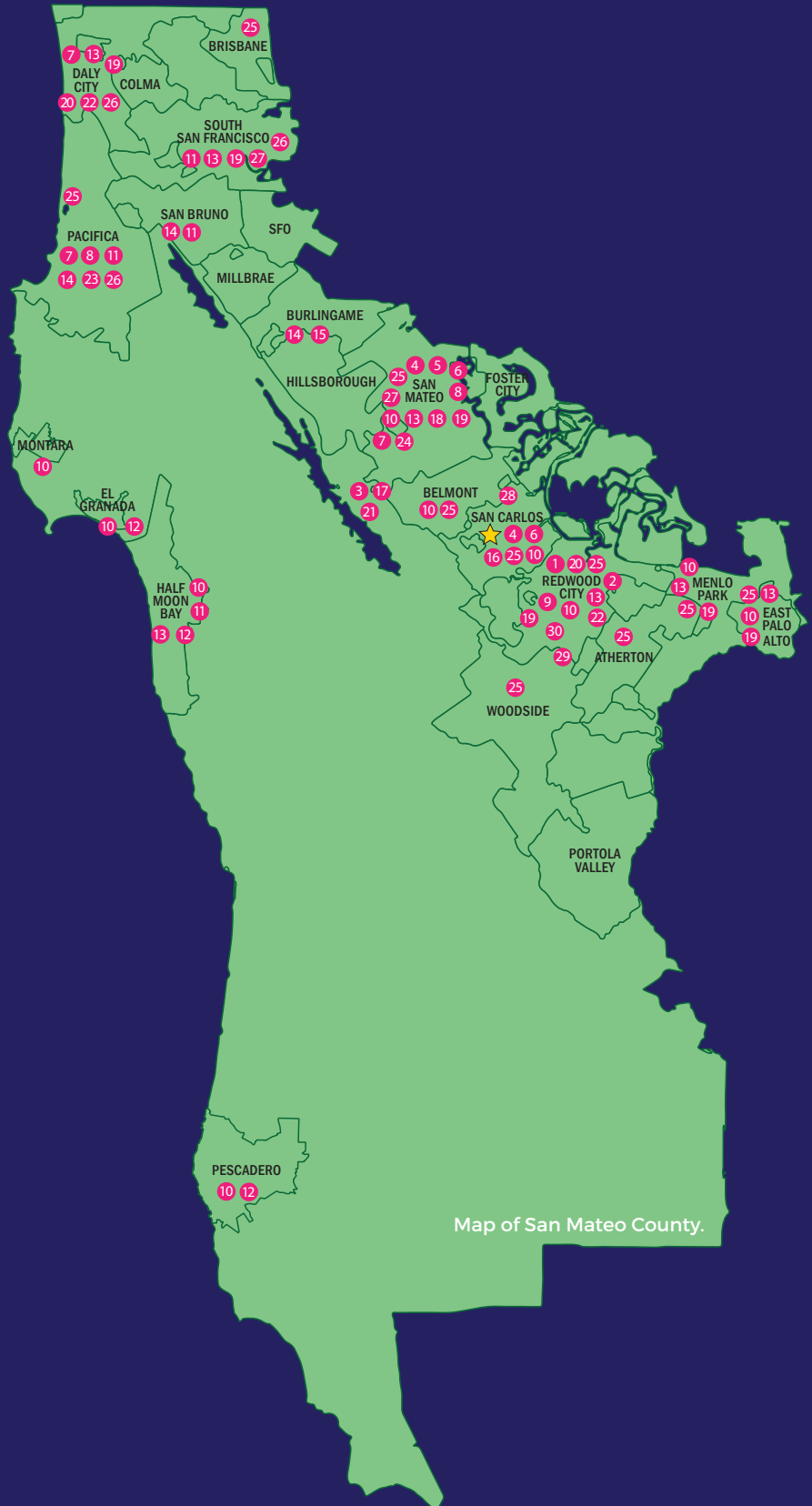


STAR VISTA

Our Program Locations

1. Archway
2. Bridges
3. Camp Glenwood
4. Child and Family Resource Center (CFRC)
5. Child and Parent Services
6. Children's Place
7. Counseling Center
8. Crisis Intervention and Suicide Prevention Center
9. Daybreak
10. Differential Response
11. Driving Under the Influence (DUI) Services
12. Early Childhood Community Team
13. Early Childhood Mental Health Consultation
14. First Chance Outpatient Services
15. First Chance Sobering Station
16. Foster Youth Education Enrichment Services
17. G.I.R.L.S./CAMP KEMP
18. Health Ambassador Program-Youth (HAP-Y)
19. Healthy Homes
20. Insights
21. Institutions
22. Mindfulness-Based Treatment
23. North County Outreach Collaborative (NCOC)
24. San Mateo County Pride Center
25. School-Based Services
26. Strengthen Our Youth Programs (SOY)
27. Transitional Youth Services
28. Women's Enrichment Center
29. Your House South
30. Youth Development Initiative

★ **ADMINISTRATION** - Main Office





STAR VISTA

OUR MISSION:

We deliver high impact services through counseling, skill development, and crisis prevention to children, youth, adults, and families.



24-HOUR CRISIS HOTLINE

650-579-0350

**Our phone and web services
are available all day, every day.**

Crisis Hotline

650-579-0350

800-273-8255

Teen Website

www.OnYourMind.net

610 Elm Street, Suite 212
San Carlos, CA 94070

650-591-9623

Connect with StarVista:



www.star-vista.org